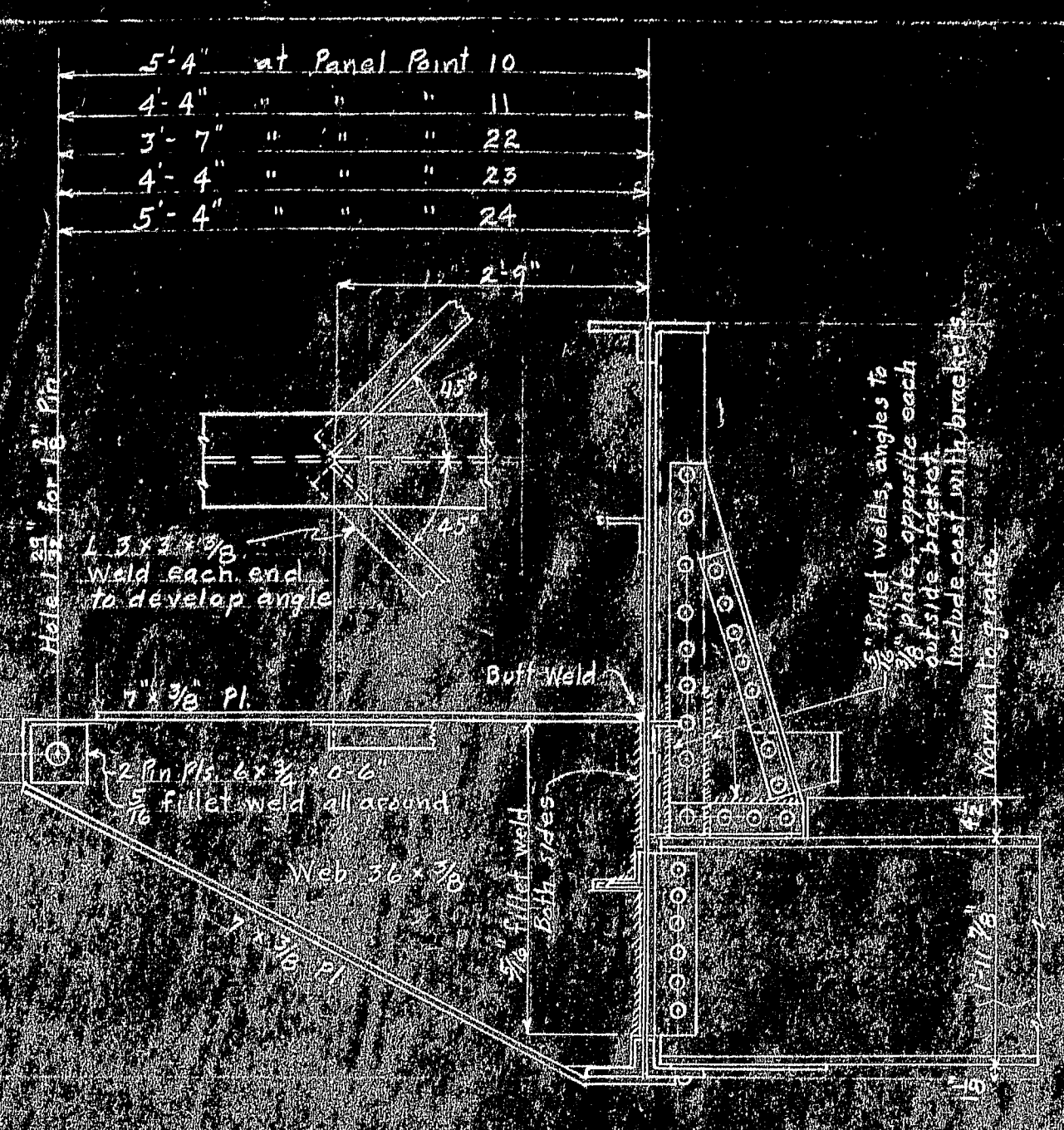
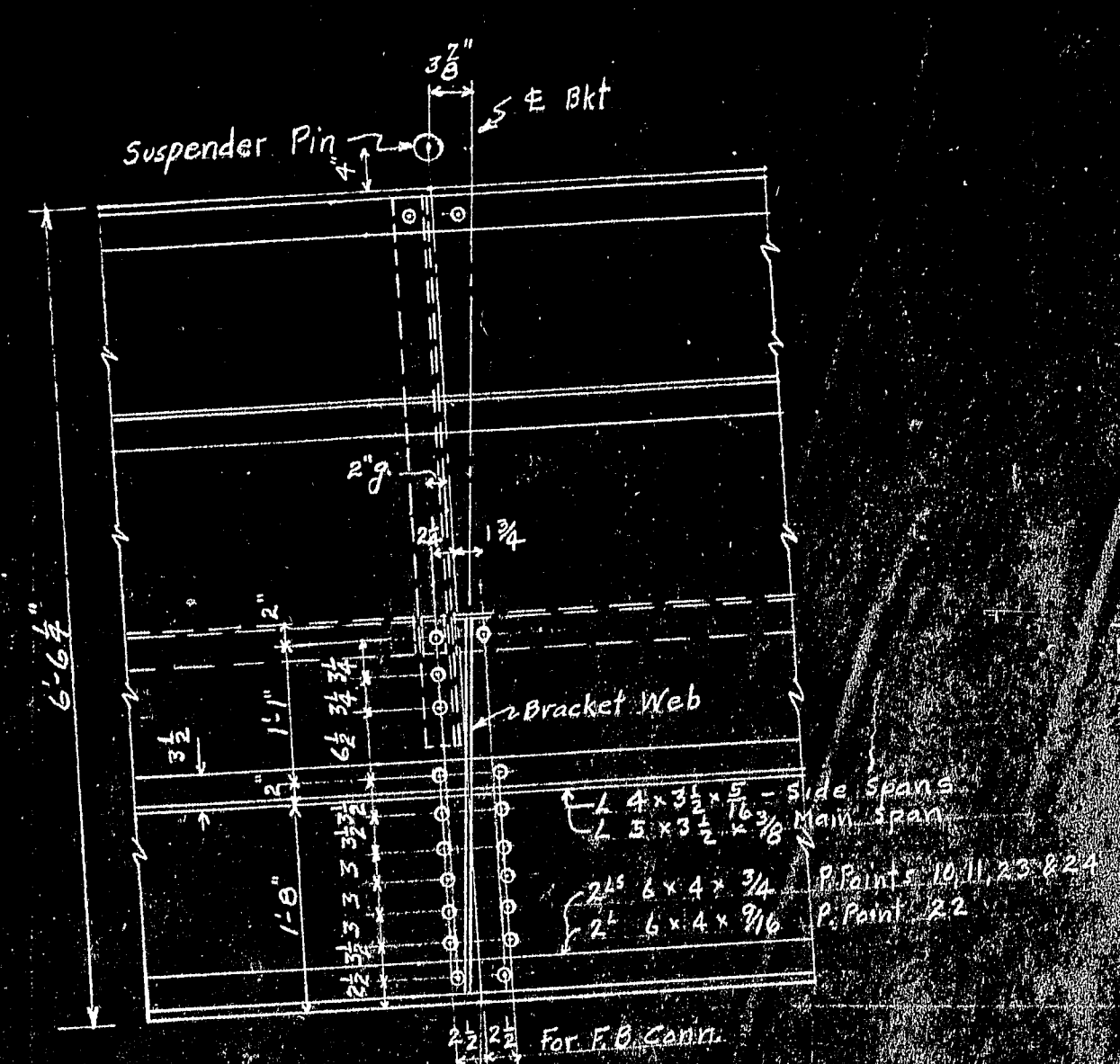
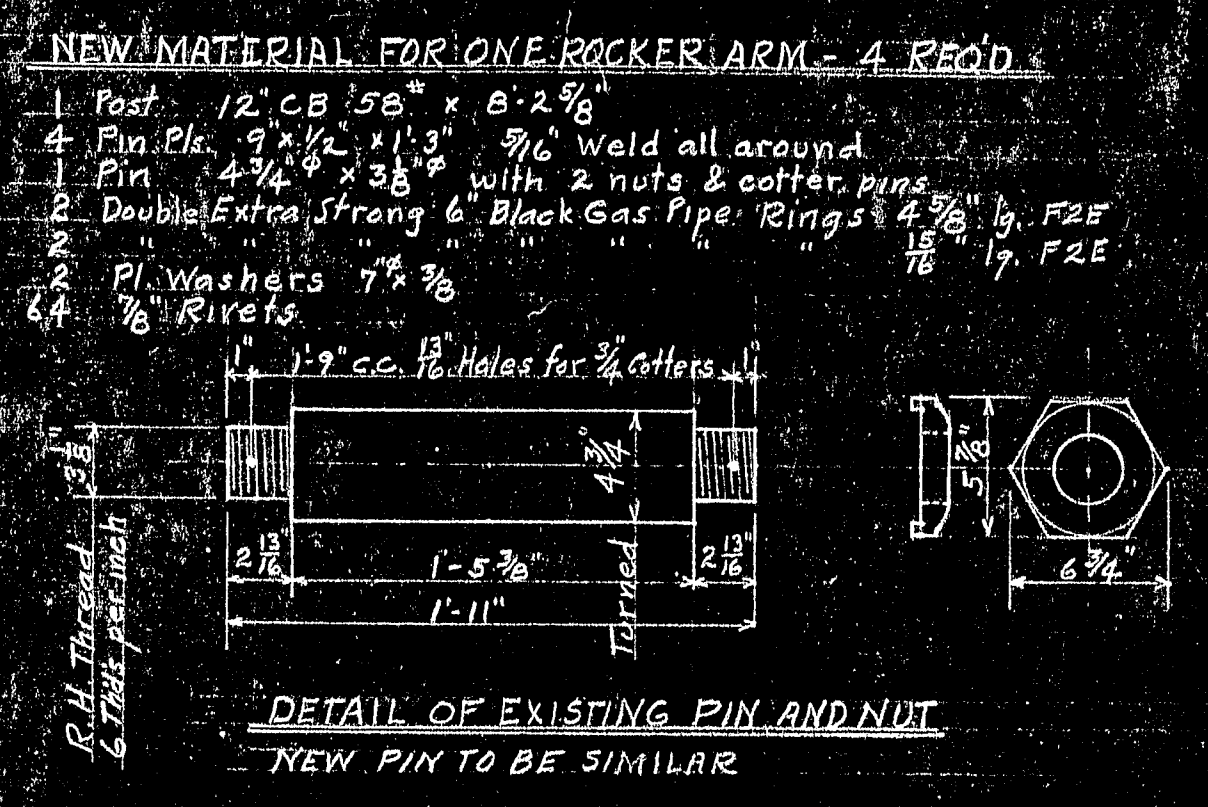
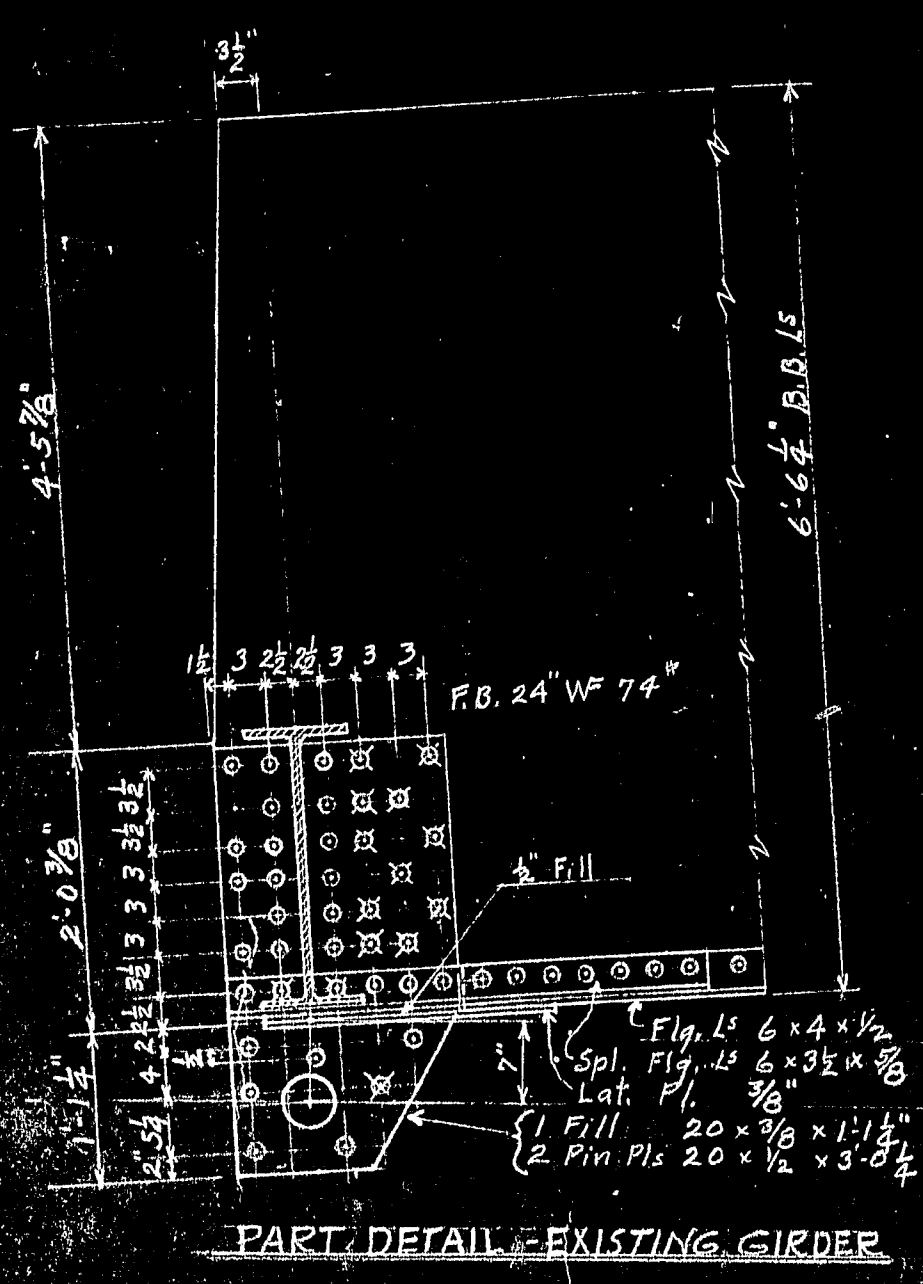
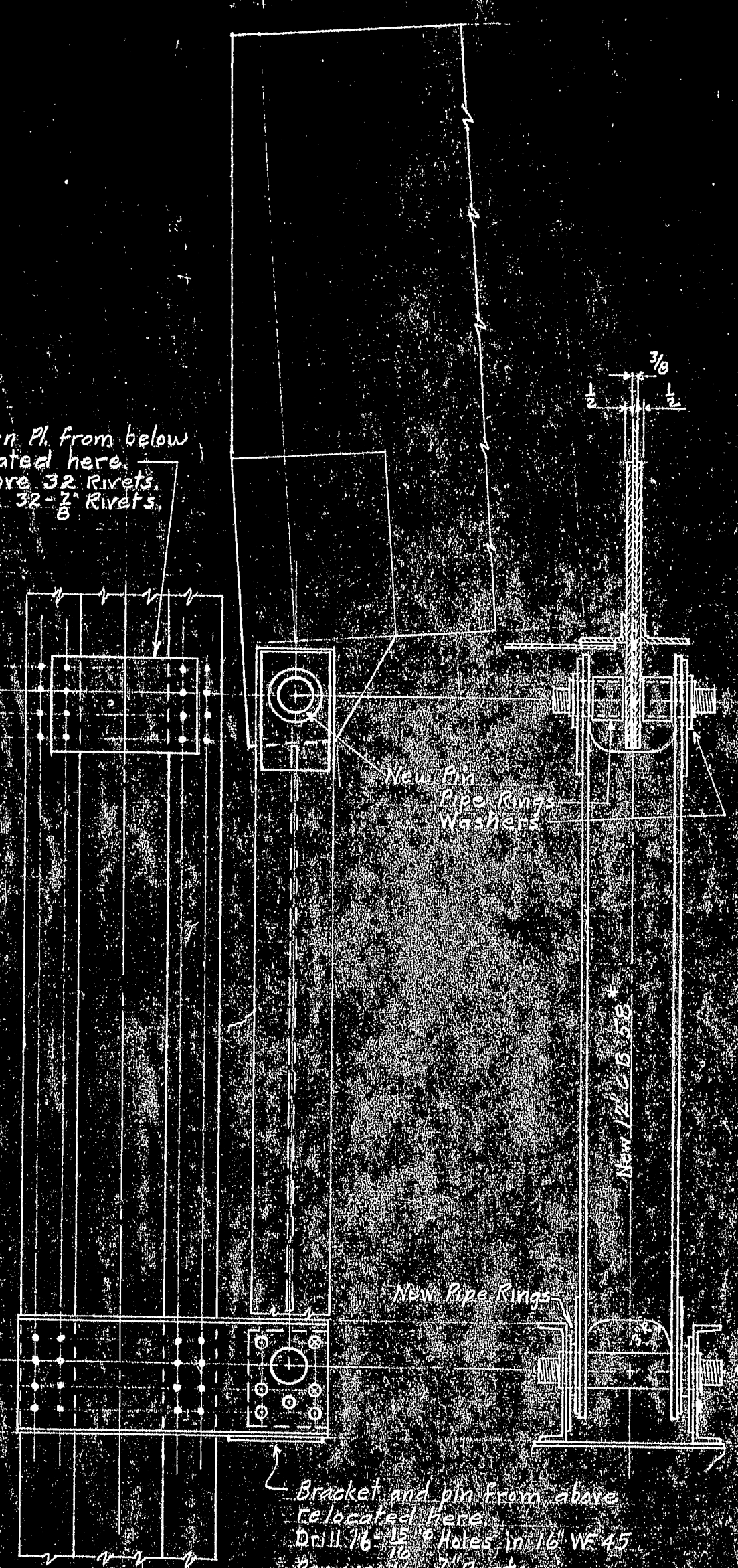


Batten Pl. from below
relocated here.
Remove 32 Rivets.
Drive 32- $\frac{5}{8}$ Rivets.



NOTE
Rivets $\frac{5}{8}$ " unless noted

STATE OF MAINE
STATE HIGHWAY COMMISSION

DEER ISLE - SEDGWICK BRIDGE
REINFORCEMENT WITH CABLE STAYS

CABLE BENT ROCKER ARM
BRACKETS FOR TRANSVERSE STAYS

ROBINSON & STEINMAN
CONSULTING ENGINEERS
NEW YORK CITY

DRAWING NUMBER
RS 4207-4
FEBRUARY 26, 1943

